

## Master-PUR Inline

Article Master No.: 000195

**PU Suction hose & Transport Hose, extremely abrasion resistant, vacuum proof, seamless, very smooth inner lining, antistatic, microbe-resistant**



antistatic



microbe  
resistant



hydrolysis  
resistant



moderatel  
y flexible



heavy



very  
pressure  
resistant

### Product Details

#### Construction / Material

- Type of construction: profile extruded hose with metal spiral
- Spiral Design: made of steel wire
- Material of the spiral: spring steel
- Execution of the wall: made of pure material, made of specified material, addition of a non-migrating permanent antistatic agent, wall thickness between the spirals approx. 5.5 mm
- Specifications of the wall: surface resistance  $R_0 < 10^9$  Ohm, measured according to DIN EN ISO 8031
- Material of the inner layer: Polyether Polyurethane
- Specifications of the inner layer: extremely abrasion-resistant, super-strong inliner made of polyurethane 60° Shore A
- Material of the outer layer: Polyester Polyurethane

#### Properties

- Specifications of the product: according to TRGS 727 and ATEX 2014/34 EU
- Chemical Properties: microbe-resistant, halogen-free, good resistance to chemicals, good UV resistance, good resistance to oil, good resistance to petrol, good ozone resistance, plasticiser-free
- Flexibility: moderately flexible
- Physical Properties: permanently antistatic

- **Weight:** heavy
- **Pressure Resistance:** very pressure resistant
- **Colour:** colour of the interior wall
- **Other:** high vacuum and good pressure resistance, particularly smooth on the inside, configurable as a hose system with digital interface for compatibility with the AMPIUS® app

### Operating Temperature

- **Temperature Range:** -40 - 90
- **short-term maximum temperature:** peaks to 125 °C

### Delivery Information

- **Delivery, type of production:** various nominal widths in standard lengths are available ex-production, individual nominal widths and lengths also ex-stock

### Application Areas

- **Areas of application:** Industry, Bulk & Construction, Chemistry, Food & Pharma, Waste Disposal & Cleaning Technology, Plastics, Textile, Metal & Toolmaking

### Customizing Options

- **optional item modification (on request):** other colours, other lengths, other nominal widths, with customer-specific imprint

## Article Variants

| Extended Article Number | Article number | Nominal Size (DN) mm | Outer diameter mm | Bending radius* mm | Weight kg/m | Operating pressure bar | Negative pressure bar | Max. Production length m | Stock Lengths m           | Length (standard lengths available for order) m |
|-------------------------|----------------|----------------------|-------------------|--------------------|-------------|------------------------|-----------------------|--------------------------|---------------------------|-------------------------------------------------|
| 000195:38:x             | 000195         | 38                   | 56                | 150                | 1.72        | 4.65                   | 0.94                  | 20.00                    | /                         | 2.5, 5, 7.5, 10, 15, 20                         |
| 000195:40:x             | 000195         | 40                   | 58                | 160                | 1.79        | 4.50                   | 0.94                  | 20.00                    | /                         | 2.5, 5, 7.5, 10, 15, 20                         |
| 000195:51:x             | 000195         | 51                   | 70                | 200                | 1.64        | 4.13                   | 0.94                  | 20.00                    | 2.50, 5, 7.50, 10, 20     | 2.5, 5, 7.5, 10, 15, 20                         |
| 000195:65:x             | 000195         | 65                   | 85                | 300                | 2.02        | 3.90                   | 0.94                  | 20.00                    | 2.50, 5, 7.50, 10, 15, 20 | 2.5, 5, 7.5, 10, 15, 20                         |
| 000195:76:x             | 000195         | 76                   | 97                | 400                | 3.44        | 3.75                   | 0.94                  | 20.00                    | 2.50, 5, 7.50, 10, 15, 20 | 2.5, 5, 7.5, 10, 15, 20                         |
| 000195:80:x             | 000195         | 80                   | 99                | 410                | 2.69        | 3.38                   | 0.94                  | 20.00                    | 2.50, 5, 7.50, 10, 15, 20 | 2.5, 5, 7.5, 10, 15, 20                         |
| 000195:102:x            | 000195         | 102                  | 122               | 430                | 4.39        | 3.00                   | 0.94                  | 20.00                    | 2.50, 5, 7.50, 10, 15, 20 | 2.5, 5, 7.5, 10, 15, 20                         |
| 000195:115:x            | 000195         | 115                  | 136               | 440                | 4.90        | 2.60                   | 0.94                  | 15.00                    | /                         | 2.5, 5, 7.5, 10, 15                             |
| 000195:127:x            | 000195         | 127                  | 148               | 450                | 5.69        | 2.40                   | 0.94                  | 15.00                    | 2.50, 5, 7.50, 10, 15     | 2.5, 5, 7.5, 10, 15                             |
| 000195:152:x            | 000195         | 152                  | 175               | 600                | 7.30        | 1.95                   | 0.94                  | 15.00                    | /                         | 2.5, 5, 7.5, 10, 15                             |
| 000195:175:x            | 000195         | 175                  | 198               | 700                | 7.48        | 1.80                   | 0.77                  | 10.00                    | /                         | 2.5, 5, 7.5, 10                                 |
| 000195:180:x            | 000195         | 180                  | 202               | 700                | 7.68        | 1.65                   | 0.75                  | 10.00                    | /                         | 2.5, 5, 7.5, 10                                 |
| 000195:200:x            | 000195         | 200                  | 223               | 800                | 10.01       | 1.35                   | 0.67                  | 10.00                    | 2.50, 5, 7.50, 10         | 2.5, 5, 7.5, 10                                 |
| 000195:203:x            | 000195         | 203                  | 227               | 800                | 10.20       | 1.35                   | 0.67                  | 10.00                    | /                         | 2.5, 5, 7.5, 10                                 |
| 000195:250:x            | 000195         | 250                  | 271               | 1000               | 12.07       | 0.95                   | 0.50                  | 10.00                    | /                         | 2.5, 5, 7.5, 10                                 |

All data refer to a medium and ambient temperature of +20°C.  
 Specification of the bending radius related to the inside of the hose bend  
 Subject to technical changes and colour deviations

## Delivery Variants

Available in other lengths, other nominal diameters, with customer-specific customer-specific imprint.

## Disposal instructions

After use, the product must be disposed of in accordance with the legal regulations applicable in the user's region (in Germany in accordance with the applicable Waste Catalogue Ordinance (AVV)).

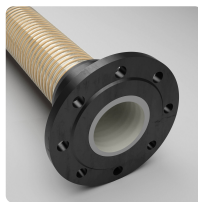
## Possible Connection Elements



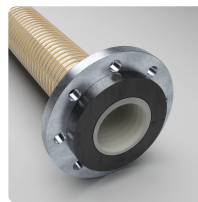
**Hose Clamp with Bolts**  
 special clamp for fastening medium and heavy spiral hoses to connection pipes on mobile and stationary units



**Hose Clamp with Bolts, Steel quality W4, stainless steel 1.4301**  
 Special clamp for fastening medium and heavy spiral hoses to connection pipes on mobile and stationary units



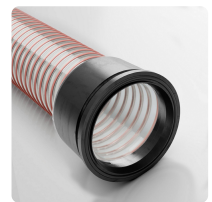
**Combiflex Cast-on PU Fixed Flange**  
 Fixed PU flange for all Master-PUR hoses, for counterflanges to DIN 2632 / DIN 2633 / DIN 2673



**Combiflex Cast-on PU Swivel Flange**  
 Fixed cast-on PU loose flange for all Master-PUR hoses, for counterflanges to DIN 2632 / DIN 2633 / DIN 2673



**Clamp Collars, screwed**  
 Clamp collars according to DIN EN 14420-3



**Combiflex PU Cone Flange permanently installed**  
 fixed quick connector system for all Master-PUR L, Master-PUR H and Master-PUR HX hoses, following DIN 3016

### Individual consultation

We offer consultation by phone:  
 +49 209 97077-112

Product requests via  
[masterflex.de/en](https://www.masterflex.de/en)

### Address Headquarters

Masterflex SE  
 Willy-Brandt-Allee 300  
 45981 Gelsenkirchen

